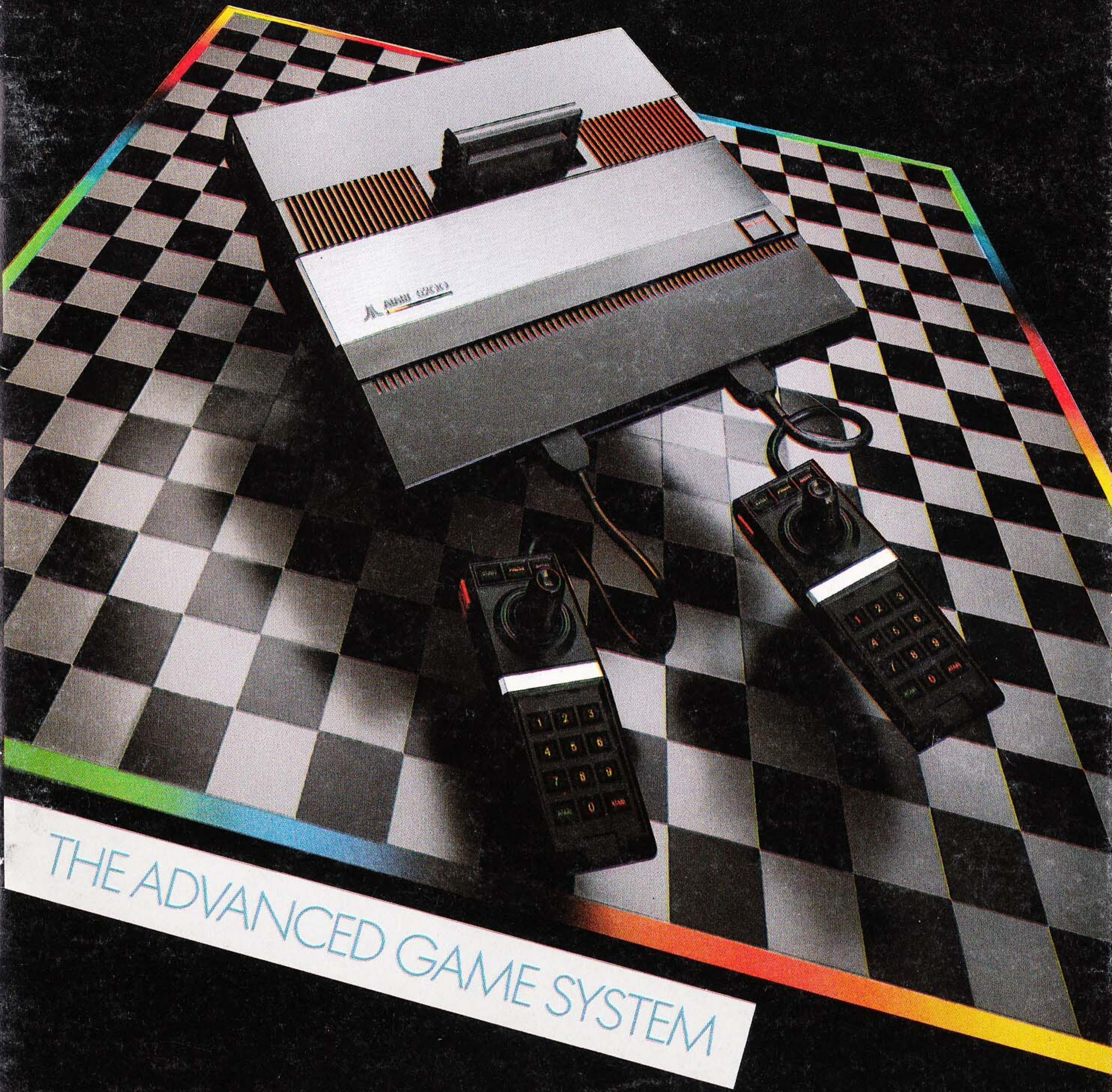


**ATARI** 5200™



THE ADVANCED GAME SYSTEM

**ATARI® PROUDLY PRESENTS**



**THE NEW ATARI 5200™**

**ONLY ATARI COULD BRING YOU A GAME SO ADVANCED, SO REALISTIC, SO MUCH FUN TO PLAY.**

The ATARI 5200 reflects a wealth of engineering experience and expertise. ATARI tapped leading edge technology to create a home video game system that gives you arcade game action, realism and quality.

**THE ATARI 5200 FEATURES A SLEEK, COMPACT DESIGN.**

Cord and controller areas are built in for a streamlined appearance that makes the 5200 game as exciting to look at as it is to play. The quality is built in, too, for top performance and reliability.

**ALL-IN-ONE PRECISION CONTROLLERS PUT ALL THE ACTION AT YOUR FINGERTIPS.**

The 5200 controllers combine a 360° analog Joystick that lets you maneuver with new ease and accuracy, a twelve button Keypad, and Start, Reset, and Pause buttons. The pause feature lets you freeze the action whenever you want, then start it again whenever you're ready.

**5200 GAME SOFTWARE MAKES FULL USE OF THE POWERS OF THIS NEW SYSTEM.**

ATARI 5200 game graphics seem to come alive on the television screen. You'll see sports figures leaping and running. Tanks weaving through a pine forest. Asteroids bursting in air. Realistic sound effects add to the fun, with booms, blasts and bangs that make you feel like you're really there. Like all ATARI games, the 5200 game cartridges are easy to learn and challenging to master, for endless involvement and fun.



## ENTER A NEW ERA IN HOME ENTERTAINMENT

The ATARI 5200 attaches easily to your television set. (It won't interfere with regular viewing.) The game cartridges plug into the game console, and bring all the excitement, color and action of arcade quality games into your living room.

## RIGHT NOW YOU CAN CHOOSE FROM A SENSATIONAL SELECTION OF 5200 GAME CARTRIDGES.

There's a collection of coin-operated favorites—like PAC-MAN,\* GALAXIAN,\* and many others. There's a field of realistic sports games like FOOTBALL, SOCCER and BASEBALL. And a group of updated ATARI classics, like SUPER BREAKOUT™ (which is packed with the 5200 Game System).

And this is just the beginning. Soon there'll be many more 5200 game cartridges to choose from. And, in 1983 exciting options will be introduced, including TRAK-BALL™ (just like the sophisticated arcade controller), a voice synthesizer, and a special module that will allow ATARI VCS™ cartridges to be played on the 5200 system. For a look at the fun that's available right now, and a hint of what's to come, just turn the page.

\*Trademarks of Bally Midway Mfg. Co. licensed by Namco-America, Inc.



## PAC-MAN\*

This game cartridge looks like the arcade original, sounds like the arcade original, and is just as much fun as the arcade original! (It even has an intermission between games.)

PAC-MAN races around a maze, gobbling up dots and dodging ghosts. (Just like the arcade game, these ghosts come in four colors—red, pink, green and orange.) In the four corners of the maze there are power pills. When PAC-MAN eats one, the ghosts all turn blue, and he can eat them, too. But he has to hurry before the spell wears off, or they'll devour him.

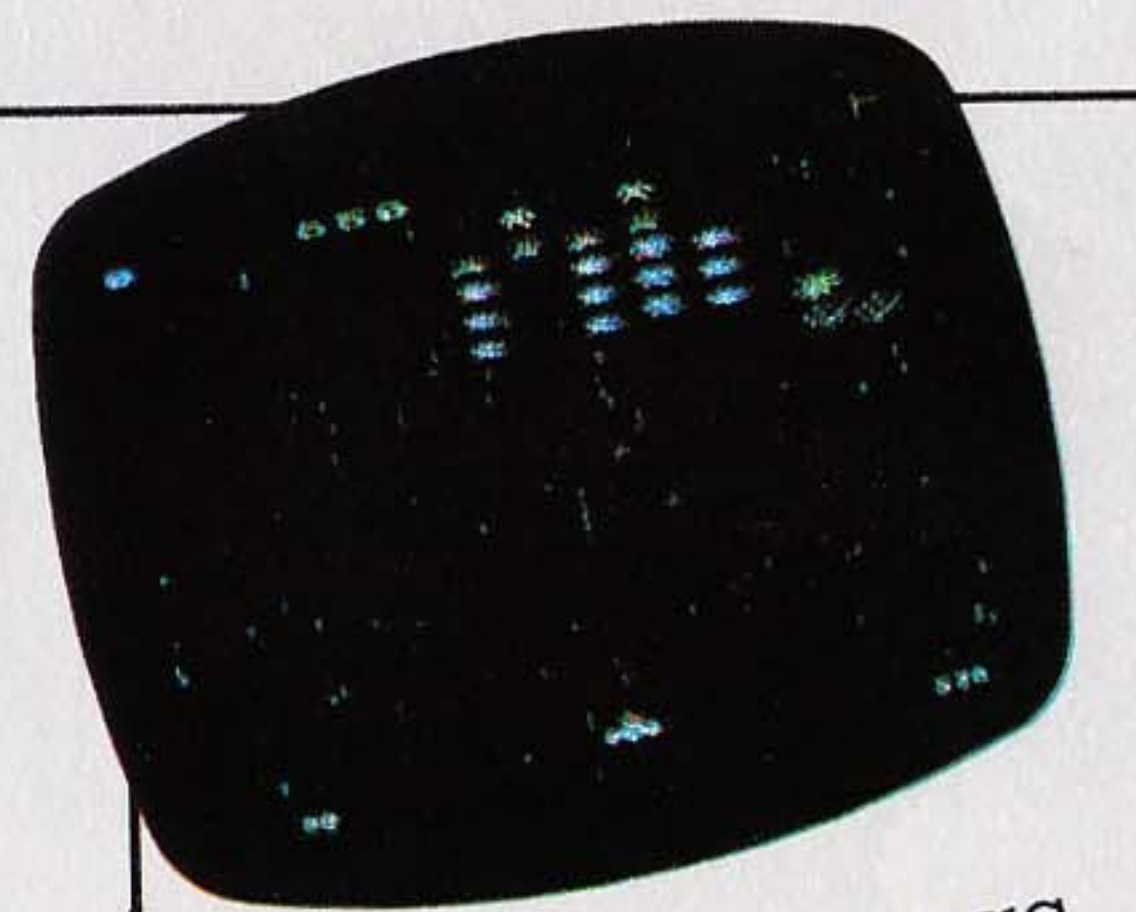


One or two players  
CX5208

\*PAC-MAN, and characters are trademarks of Bally Midway Mfg., licensed by Namco America, Inc.

## GALAXIAN\*

Beware of the Galaxian fleet, for it is fast and strong, and experienced in battle. Their warfare includes tricks to divert your attention. They force you to use foresight and caution, along with cunning and skill. The Galaxian fleet attacks in waves, with each wave approaching faster and faster. The warriors' ranks can be identified by the color of their uniforms, blue purple, red or yellow. You must protect your planet from this colorful, but undesirable, invasion.



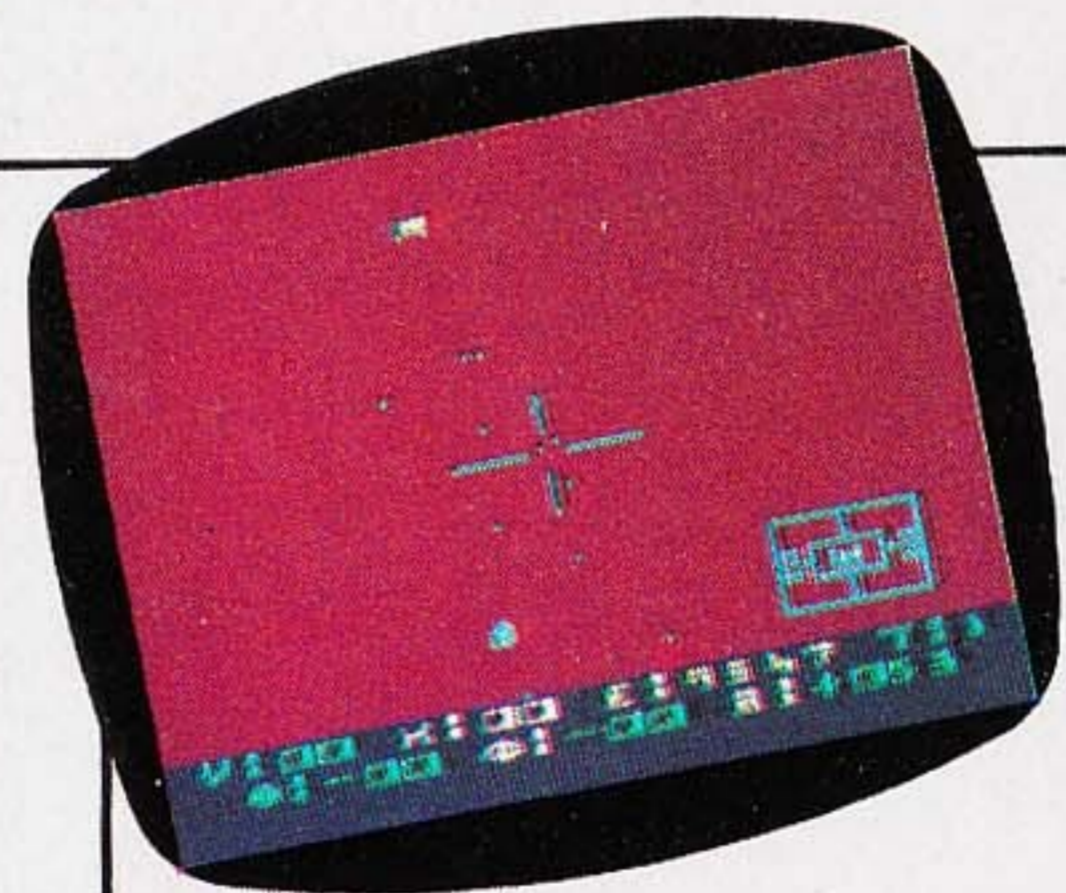
One or two players  
CX5206

\*Trademark of Bally Midway Mfg. Co. licensed by Namco-America, Inc.



## STAR RAIDERS™

As a new cadet, you must first master the basics of flight simulation and computer training before you can move up the ranks and see real action. If you show promise, you'll be promoted quickly, and join the elite STAR RAIDERS™ on board the ultimate in sophisticated fighter space craft. Who knows? You might even make it to the top as a Star Commander. But this is tough service, so don't get too cocky, or you could find yourself demoted to Garbage Scow Captain.



One Player  
CX5205



## MISSILE COMMAND™

Back on Earth, the Planet Zardon is known as the Resource Planet, because of the precious ore and minerals that are mined here. It's an honor to be Commander of Defense for a planet as important as this one. So far, protecting Zardon has been a piece of cake. But today the hot line flashes wildly, and you learn that a barrage of enemy missiles is heading straight at you. You must employ quick thinking and strategy to pit Zardon's Anti Ballistic Missiles against the attackers' fierce onrush of weapons.



One or two players  
CX 5202



## SPACE INVADERS\*

As a recent enlistee in the Earth Defense Corps, you have undergone weeks of intensive training. You've memorized the SPACE INVADERS manual, and now it's time to take the final, critical test. You must prove what you've learned in a simulated attack situation. You and a second enlistee climb into a laser tank. The hatch cover closes overhead with a soft whirring sound. The screen in front of you lights up and a column of bomb dropping aliens advances toward you. Have you learned your lessons well? No time to refer to the manual now.



One or two players  
CX 5204

\*Trademark of Taito America Corporation.



## ASTEROIDS™

Trapped in space somewhere between the planets Ortanus and Earth, your ship is suddenly surrounded by a field of massive asteroids. And, as if that weren't enough excitement for one day, a group of alien saucers stage a surprise attack. Quickly you take over the controls to save your ship from imminent doom. You must thrust away from the path of the oncoming asteroids. Put up shields to protect the ship. Hyperspace into thin air. Flip over and get the asteroids attacking from behind. It's all in your hands now. Good luck!

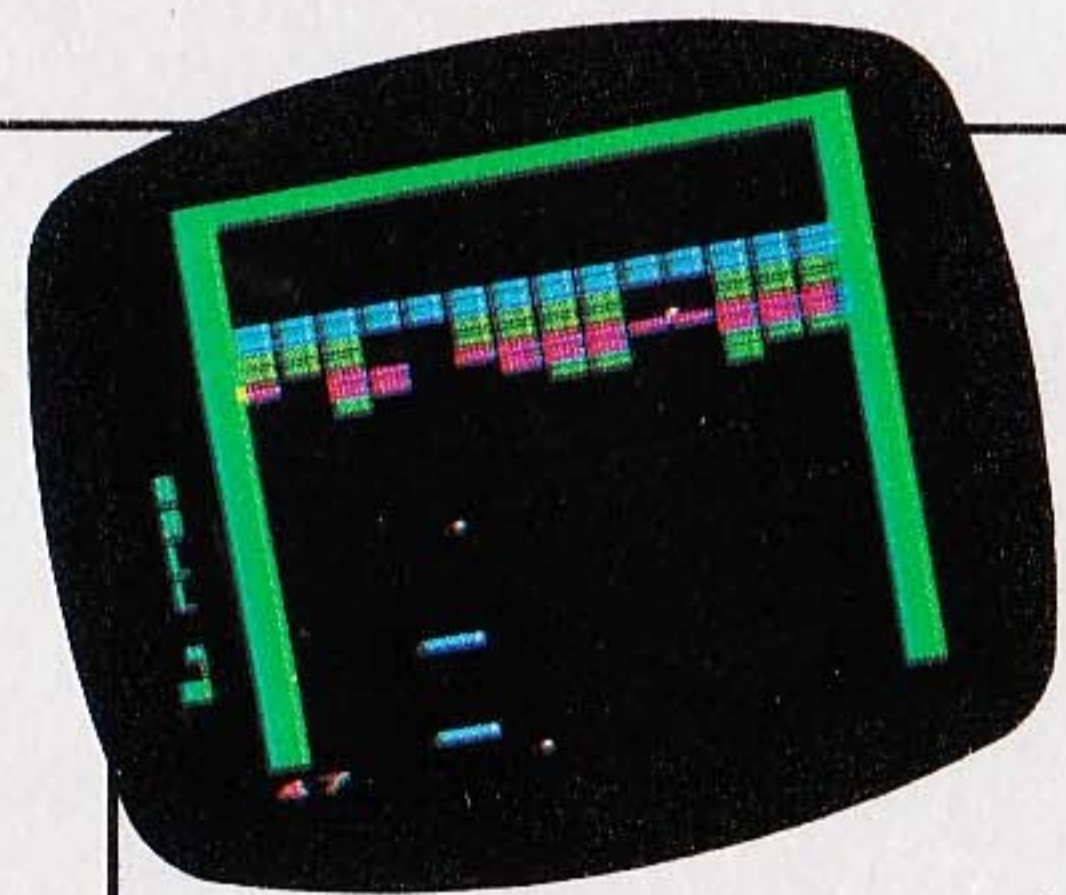


One to four players  
CX5201



## **SUPER BREAKOUT™**

You are invited to the beautiful, rainbow shrouded planet of Striae to participate in an interplanetary galactic games event. Your challenge is to heft a metallic sphere and hurl it through a wall of glowing iridium bricks. Shatter the bricks with your first successful shot, and you'll discover another wall behind the first, then another and another. Try to keep the sphere in play to break through row after row of seemingly impenetrable colored layers.



One to four players  
CX5203

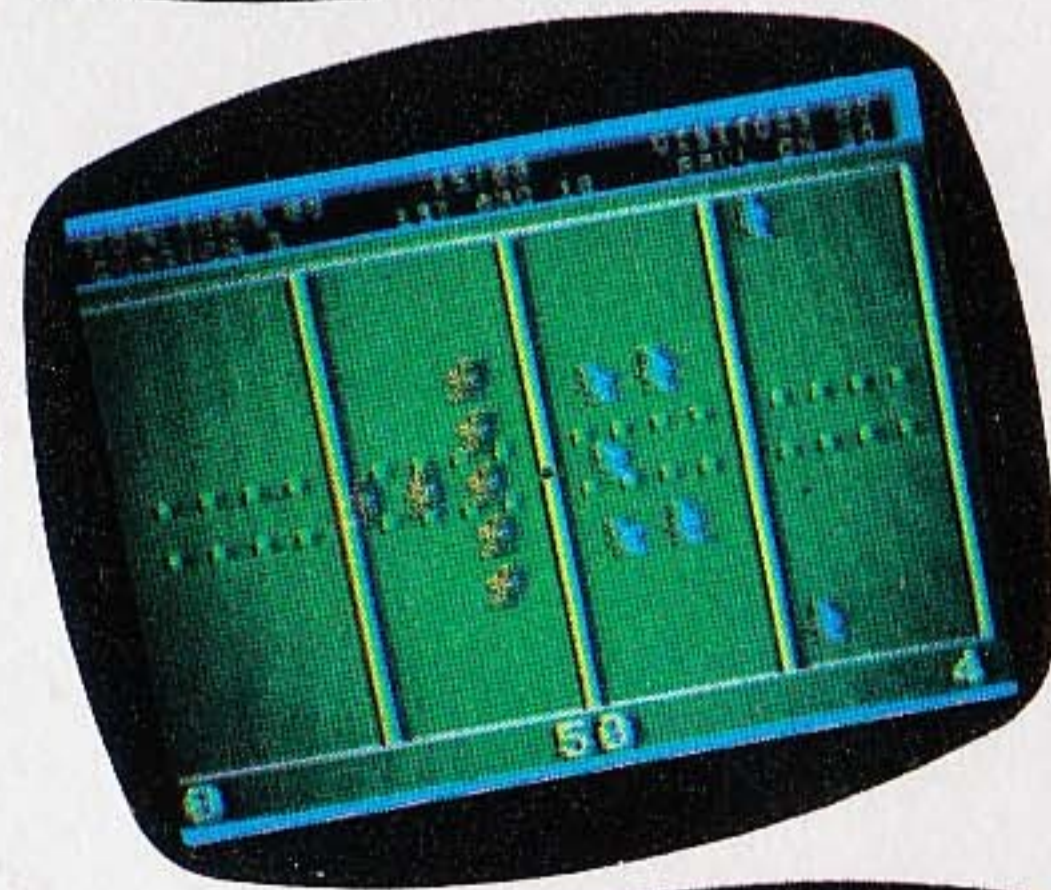


**COMING SOON: A NEW GROUP OF SPORTS GAMES THAT ARE TOPS IN THEIR FIELD.**

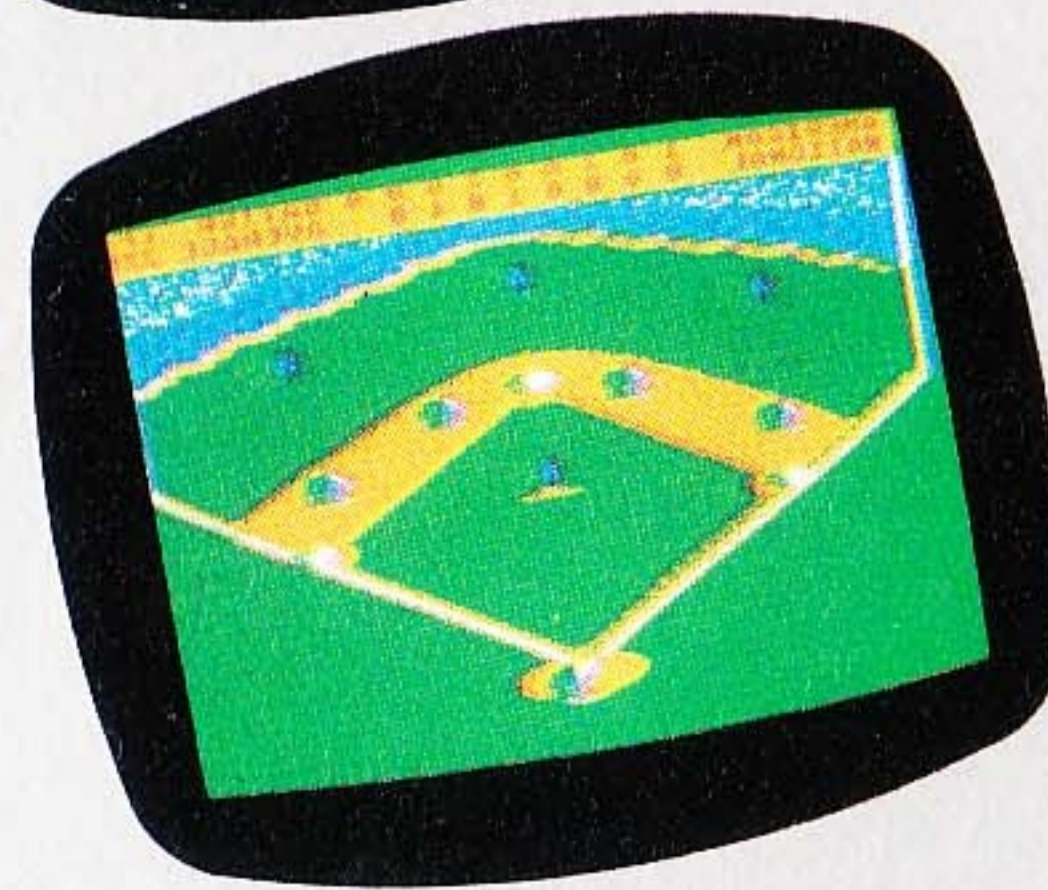
**SOCCER**  
CX5213



**FOOTBALL**  
CX5207



**BASEBALL**  
CX5209



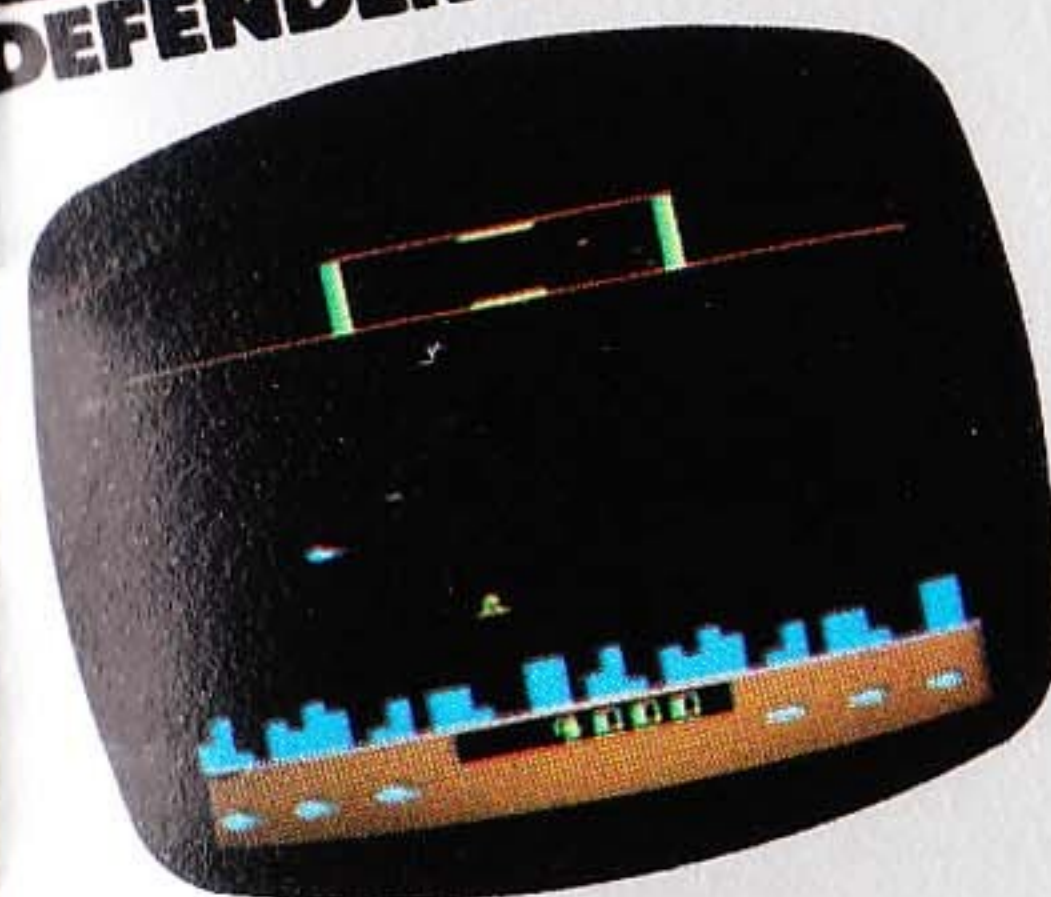
You're going to see some real action on your television screen with the ATARI 5200 Sports game cartridges! The fun begins with our SOCCER, FOOTBALL and BASEBALL games. And there's more to come. So start your warming up exercises now!

AND THERE'S  
EVEN MORE  
FUN IN THE  
FUTURE WITH  
CENTIPEDE™  
TANK\*  
QIX<sup>1</sup>  
DEFENDER<sup>2</sup>...

CENTIPEDE™ CX5215



DEFENDER CX5218



\*Tentative title  
1 Trademark of Taito-America Corporation  
2 Trademark of Williams Electronics

AND TRAKBALL™  
THE SUPER ARCADE-  
STYLE CONTROLLER





©1982 ATARI, INC. All Rights Reserved  
Printed in USA V415 7/82

