

NES-WK-USA ★

# WRATH OF THE BLACK MANTA™



# HOW TO PLAY

**TAITO™**  
THE ONLY GAME IN TOWN.™

Printed in Japan.

**TAITO™**

EmuMovies



TAITO SOFTWARE, INC.



This official seal is your assurance that Nintendo® has reviewed the product and that it has met our standards of excellence in workmanship, reliability and entertainment value. Always look for this seal when buying games and accessories to ensure complete compatibility with your Nintendo Entertainment System®.

This game is licensed by Nintendo® for play on the



Nintendo® and Nintendo Entertainment System® are trademarks of Nintendo of America Inc.

## CARE OF YOUR GAME

- Always make sure the power is off when inserting or removing the game pak from your computer.
- This is a high precision game pak. Avoid subjecting it to extreme temperatures or shocks. Store at room temperature. Never attempt to dismantle it.
- Do not touch the terminal connectors or get them wet or the circuitry may be damaged. Never insert your fingers or any metal objects into the terminal leads.
- Use of thinners, solvents, benzene, alcohol and other cleaning agents can damage the game pak.

Nintendo recommends against using a rear projection television with your NES as image retention on the screen may occur.

Taito® and Black Manta™ are trademarks of Taito America Corp. Copyright © 1989. All Rights Reserved.

## THANK YOU

for buying **Wrath of the Black Manta** from Taito!  
This hit is now yours to enjoy at home! For the most fun, read this instruction manual thoroughly before you begin your mission!

THE STORY .....	2
HOW TO OPERATE .....	3
PLAYER STATUS & SCORING .....	5
REGULAR WEAPONS .....	6
NINPO ARTS .....	7
GAME LEVELS .....	11
SPECIAL CHARACTERS .....	16
SPECIAL ITEMS .....	17
CONTINUE OPTION .....	18
HINTS AND TIPS .....	19
COMPLIANCE WITH FCC REGULATIONS .....	20
WARRANTY .....	21

## THE STORY

Crime and kidnapping grips New York City. A lone figure leaps from the shadows and grabs an unsuspecting informant from **DRAT** (**D**rug **R**unners **A**nd **T**errorists). Stricken with fear, the poor fool stares into a pair of cold blue eyes. This mysterious hero is no ordinary crime fighter. His name sends cold shivers up the meanest criminal's spine. Criminals beware - **BLACK MANTA** is on your tail.

**WRATH OF THE BLACK MANTA** consists of five levels.

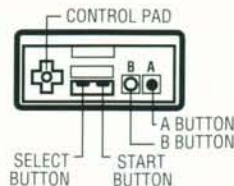
Each level is completed when the player defeats the criminals and their leaders. You must defeat the drug lord and rescue his prisoner to win the game.



## HOW TO OPERATE

### Controller

"A" Button      Jump Up.  
"B" Button      Throw Dart/Use Knife



**Start Button** - Press the **START** button to begin the game.

**Pause Function** - Press the **START** button to pause the game  
- Press the **START** button to resume play.

**Select Button** - Press the **SELECT** button during game play to display the **NINPO ARTS** screen.

### Conversation Mode:

Press the "A" button to see the next conversation scene.  
Press the "B" button to stop a conversation.  
Press the "B" button to stop reading a letter.



## HOW TO OPERATE (continued)

### BLACK MANTA MOVEMENTS

Up Arrow Key	Open Door.
Down Arrow Key	Crouch down.
Left Arrow Key	Move left.
Right Arrow Key	Move right.



### SPECIAL MOVEMENTS

Down Arrow + "A" Button	Jump down.
Left Arrow + "A" Button	Somersault left.
Right Arrow + "A" Button	Somersault right.



## PLAYER STATUS & SCORING

The player's current score and status are displayed below the game screen:

- Number of lives.
- Player score.
- **POW** indicator.
- Current strength.



## REGULAR WEAPONS

**Black Manta** has two types of **regular** weapons:

<b>Darts</b>	Thrown from a distance.
<b>Short Sword</b>	Always used at close range.

Press the "**B**" button once on Controller One to use these weapons.  
Press the "**B**" button repeatedly to perform multiple attacks.



## NINPO ARTS

**Ninpo Arts** are divided into four groups:

### GROUP "A" ARTS

<b>Art of the Fire Bomb</b>	Fire falls from the sky diagonally.
<b>Art of Lightning</b>	Lightning bolts strike enemy characters.
<b>Art of the Shadow</b>	A second Black Manta appears.

### GROUP "B" ARTS

<b>Art of the Fire Ring</b>	A circle of fire surrounds Black Manta.
<b>Art of Invisibility</b>	Black Manta temporarily disappears.

### GROUP "C" ARTS

<b>Art of Ground Fire</b>	Fireballs home in on enemy characters.
<b>Art of the Spider</b>	Black Manta travels underground.

### GROUP "D" ARTS

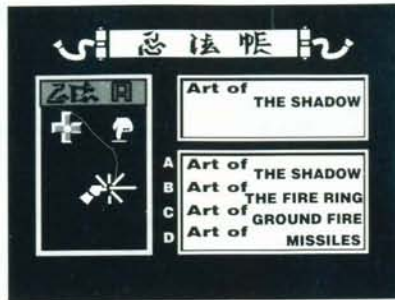
<b>Art of Fire Rain</b>	Falling fire paralyzes enemy characters.
<b>Art of Missiles</b>	Black Manta hurls fire missiles across the screen.
<b>Art of Teleportation</b>	Black Manta can teleport anywhere on the screen.



## NINPO ARTS (continued)

These highly specialized fighting techniques are earned by Black Manta when he successfully completes a level. These arts are extremely useful for defeating enemy characters and avoiding detection.

All Ninpo Arts that Black Manta can use are displayed on the Ninpo Arts Screen. This screen always appears at the beginning of a new level. Press the **SELECT** button during game play to bring up the **Ninpo Arts** screen.



## NINPO ARTS (continued)

**To select a GROUP ART:**

Press the **UP/DOWN ARROW** keys.

**To select a NINPO ART:**

Press the **RIGHT ARROW** key. A small arrow will appear inside the **GROUP ART** menu in the upper right section of the screen.

Press the **UP/DOWN ARROW** keys to move the arrow beside the new art you want to use.

Press the "A" button to activate the new Art. It will now appear in the **ACTIVE NINPO** menu in the lower right section of the screen.

Press the **LEFT ARROW** key to exit the **GROUP ART** menu.

Press the **START** button to resume play.

## NINPO ARTS (continued)

### To use a NINPO ART:

Hold down the "B" button on Controller One until the POW indicator reaches maximum force.

Hold down one of these **ARROW** keys and release the "B" button to execute the Ninpo Art:

- GROUP "A" ARTS (Release the 'B' button)
- GROUP "B" ARTS (Press LEFT/RIGHT ARROW and release 'B' button)
- GROUP "C" ARTS (Press DOWN arrow and release 'B' button)
- GROUP "D" ARTS (Press UP ARROW and release 'B' button)

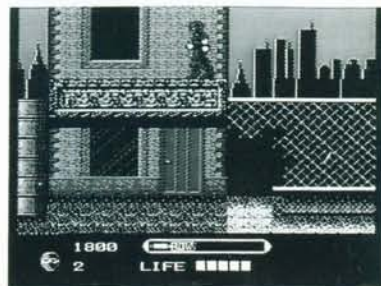


## GAME LEVELS

### INTERNATIONAL INTRIGUE AROUND THE WORLD!

#### LEVEL ONE: New York City

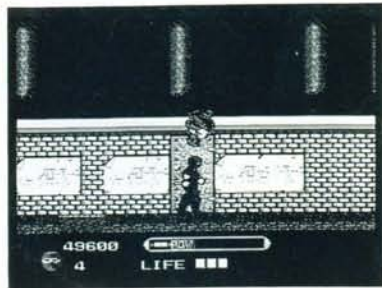
Black Manta receives a telephone call in the middle of the night from his aging Master. What's going on? The city streets and underground sewers hold kidnapped kids and terrible whispers of an international conspiracy. Just who is Tiny anyway?



## GAME LEVELS (continued)

### LEVEL TWO: Tokyo, Japan

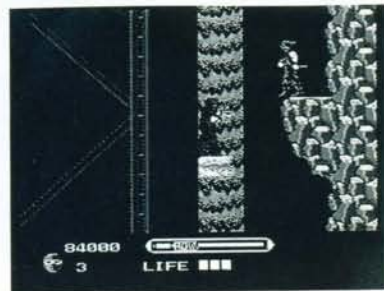
A shadow of crime casts its gloom over the Land of the Rising Sun. Black Manta enters Tokyo, only to find more kids being held prisoner by evil henchmen and Ninja. Is four to one really fair?



## GAME LEVELS (continued)

### LEVEL THREE: Rio De Janiero, South America

Welcome to lifestyles of the slick and infamous! A large private yacht lies at anchor. Who is the owner? What's inside those warehouses he owns? An ancient Voodoo temple holds the identity of this mysterious figure! But will Black Manta live to learn the awful truth?

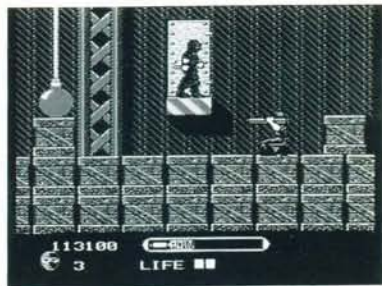




## GAME LEVELS (continued)

### LEVEL FOUR: New York City

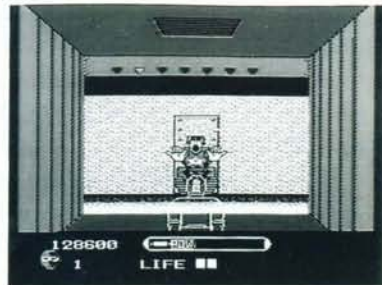
Black Manta returns to New York, hot on the trail of this mystery man. One thing is certain: Mr. X doesn't like nosy crime fighters! The chase goes on through warehouses and underground tunnels. Can armed guards and iron balls hold back Black Manta?



## GAME LEVELS (continued)

### LEVEL FIVE: DRAT Headquarters

A deserted gray warehouse is actually a worldwide center of operations! Assassins wait behind every elevator door, and an army of mercenaries patrol the halls. The mystery man waits for Black Manta in his penthouse suite. Little does our hero know that this villain has one card left to play!



## SPECIAL CHARACTERS

### Informants

This pack of crooks are the eyes and ears of **DRAT**. Grab them quickly, maybe you'll learn something useful. Look for their reddish brown uniforms.

### Kidnapped Kids

What does **DRAT** want with these innocent youngsters? It's up to Black Manta to rescue them. Who knows? They might have some important information! Be careful. They're hidden in heavily guarded rooms.



## SPECIAL ITEMS

### LETTER



Contains valuable clues.

### POW SYMBOL



Makes the **POW** indicator more powerful.

### LIFE SYMBOL



Gives Black Manta maximum strength.

### EXTRA LIVES

An extra life is awarded at 5,000, 10,000, and 15,000 points.



## CONTINUE OPTION

A player can choose to end the current game or continue it after losing all his lives. The **CONTINUE** screen appears after the **GAME OVER** screen.

### To continue the current game:

Press the **SELECT** button to choose the **CONTINUE** option.  
Press the **START** button to continue the current game.

### To end the current game:

Press the **START** button when the **CONTINUE** screen appears.

A player can continue the current game four (4) times.



## HINTS AND TIPS

- Don't eliminate informants!
- Rescue every kidnapped kid you find!
- Read every letter for a valuable clue!
- Hidden levels hold many secrets.
- Only **four different** Ninpo Arts can defeat the mysterious villain!



## COMPLIANCE WITH FCC REGULATIONS

This equipment generates and uses radio frequency energy and if not installed and used properly, that is, in strict accordance with the manufacturer's instructions, may cause interference to radio and television reception. It has been type tested and found to comply with the limits for a Class B computing device in accordance with the specifications in Subpart J of Part 15 of FCC Rules, which are designed to provide reasonable protection against such interference in a residential installation. However, there is no guarantee that interference will not occur in a particular installation. If this equipment does cause interference to radio or television reception, which can be determined by turning the equipment off and on, the user is encouraged to try to correct the interference by one or more of the following measures:

- Reorient the receiving antenna
- Relocate the NES with respect to the receiver
- Move the NES away from the receiver
- Plug the NES into a different outlet so that the computer and receiver are on different circuits.

If necessary, the user should consult the dealer or an experienced radio or television technician for additional suggestions. The user may find the following booklet prepared by the Federal Communications Commission helpful: "How to Identify and Resolve Radio-TV Interference Problems." This booklet is available from the U.S. Government Printing Office, Washington, DC 20402, Stock No. 004-000-00345-4.



## TAITO SOFTWARE, INC. LIMITED WARRANTY

Taito Software, Inc. warrants to the original purchaser of this Taito product that this cartridge is free from defects in materials and workmanship for a period of ninety (90) days from the date of purchase. This Taito product is sold "as is", without expressed or implied warranty of any kind, and Taito is not liable for any losses or damages of any kind resulting from the use of this product. Taito agrees for a period of ninety (90) days to either repair or replace, at its option, free of charge, this Taito product. Send product postage paid, along with dated proof of purchase, to the address shown below.

This warranty shall not be applicable and shall be void if the defect in the Taito software product has arisen through abuse, unreasonable use, mistreatment or neglect. THIS WARRANTY IS IN LIEU OF ALL OTHER WARRANTIES AND NO OTHER REPRESENTATIONS OR CLAIMS OF ANY NATURE SHALL BE BINDING ON OR OBLIGATE TAITO. ANY IMPLIED WARRANTIES APPLICABLE TO THIS SOFTWARE PRODUCT, INCLUDING WARRANTIES OF MERCHANTABILITY AND FITNESS FOR A PARTICULAR PURPOSE, ARE LIMITED TO THE NINETY (90) DAY PERIOD DESCRIBED ABOVE. IN NO EVENT WILL TAITO BE LIABLE FOR ANY SPECIAL, INCIDENTAL, OR CONSEQUENTIAL DAMAGES RESULTING FROM POSSESSION, USE OR MALFUNCTION OF THIS TAITO SOFTWARE PRODUCT.

Some states do not allow limitations as to how long an implied warranty lasts and/or exclusions or limitations of incidental or consequential damages, so the above limitations and/or exclusions of liability may not apply to you. This warranty gives you specific rights, and you may also have other rights which vary from state to state.

11715 North Creek Pkwy South, Suite 110 • Bothell, WA 98011  
Tel: (604) 984-3344

